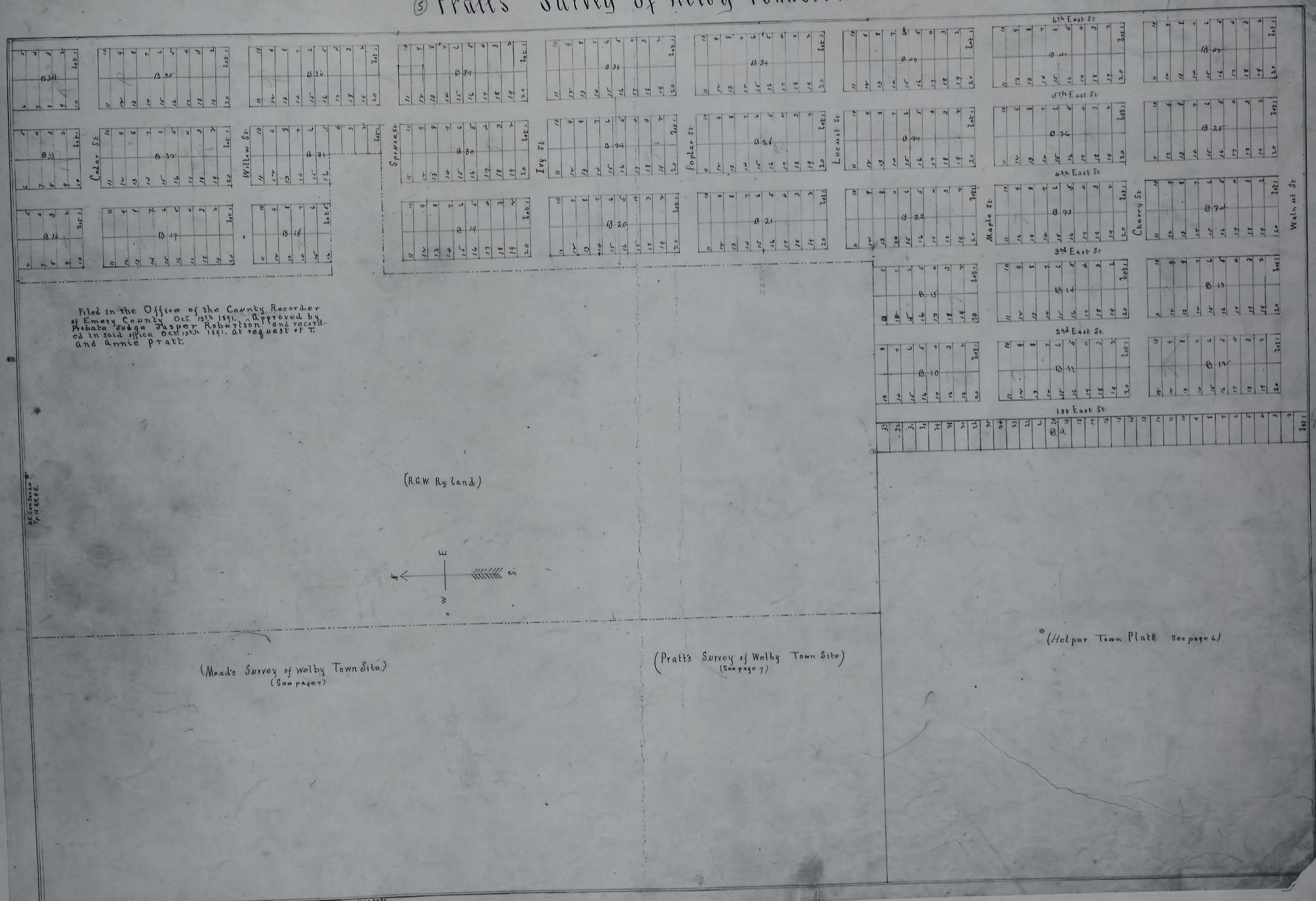


Pratt's Survey of Welby Townsite

Pratt's Survey of Welby Townsite



Filed in the Office of the County Recorder
 of Emery County Oct. 15th 1891. Approved by
 Notary Public Jasper Robertson and record-
 ed in said office Oct. 15th 1891. At request of T.
 and Annie Pratt.

RECORDED
 T. D. BAKER

Scale: 1" = 100' All lots except streets 1/2" wide except where shown